

NONPROFIT ORG  
US POSTAGE PAID  
FALMOUTH, KY  
PERMIT # 69

# The Grazing Gazette

An Agricultural Newsletter  2024 VOL. I

Hello Agrarians,

As we stand at the threshold of a brand-new year, we're excited to unveil an array of extension educational programs that promise to elevate your farming experience. Join us for the "Business of Farming" series—an enriching initiative designed to empower both novice and seasoned farmers with the knowledge and skills needed to cultivate thriving farm businesses.

Our series is an engaging workshop for farmers eager to grow their operations. From financial planning and marketing strategies to sustainable practices and innovative technologies, expert-led sessions will equip you with the tools to transform your farm into a flourishing enterprise.

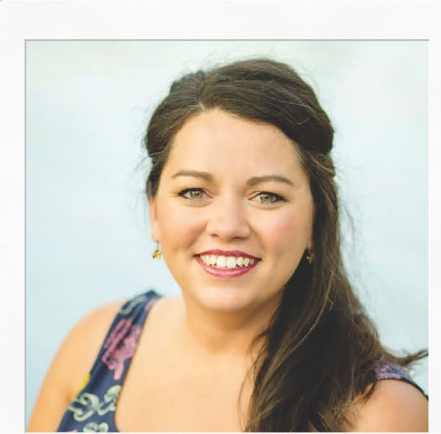
In addition to the "Business of Farming" series, we're proud to offer technical services tailored to enhance your farming journey. Take advantage of our soil sampling and forage testing services to optimize your land's productivity. Our farm consultations provide personalized insights to address your unique challenges and capitalize on opportunities.

Beyond the wealth of information, our programs foster connections within the agricultural community. Share experiences, seek advice, and join a network of like-minded individuals committed to the prosperity of farms. Check out our event calendar, featuring dates for the series kick-off, and additional programming locally, regionally, and on the state level. Be prepared to embark on a journey of growth, learning, and community building.

As we welcome the New Year, may your farms flourish, your knowledge grow, and your communities thrive. Here's to a bountiful and prosperous year for each and every one of you!

Now happy farming folks, and I hope to see ya soon!

*Lindie Huffman*



**Lindie Huffman**  
Agriculture & Natural Resource  
Pendleton County Extension Agent

## IN THIS ISSUE:

How to Have Family Conversations About Estate Planning	2
The Agent's Corner	3
Keep your Chickens Healthy this Winter	4
Dead Animal Removal Program	5
Upcoming Ag Events	6-7

Find us on 



**Cooperative Extension Service**  
Agriculture and Natural Resources  
Family and Consumer Sciences  
4-H Youth Development  
Community and Economic Development

Educational programs of Kentucky Cooperative Extension serve all people regardless of race, color, age, sex, religion, disability, or national origin. University of Kentucky, Kentucky State University, U.S. Department of Agriculture, and Kentucky Counties, Cooperating.  
LEXINGTON, KY 40546




## The BUSINESS of FARMING

A Farm Business Planning Series  
from the Pendleton County Cooperative Extension Service  
to help you cultivate success and nurture your farm business.

Call the Pendleton County Extension Office to register 859.654.3395



**Martin-Gatton**  
College of Agriculture,  
Food and Environment  
University of Kentucky

"Surviving and thriving in today's agriculture industry demands more than just hard work in the fields—it requires savvy business management skills. Join us at 'The Business of Farming Workshop' and discover how to make ends meet and achieve sustainable success on your farm. Learn the critical strategies for effective farm business management that can turn your passion into profit. Don't miss this opportunity to secure your farm's future; enroll now!"

 JAN 24	<b>The Basics of Kentucky Farming</b>	 MAR 13	<b>Opportunity or Obligation?</b>
 FEB 21	<b>Identifying and Exploring Markets</b>	 MAR 27	<b>What Business Structure Suits</b>

*All programs will be at the Pendleton County Extension Office at 6:30 PM  
Future sessions: The Power of Networks, Preparing for the Lender, and more!  
Participants who attend 5 of 8 sessions will receive a special gift.*

pendleton.ca.uky.edu | lindie.huffman@uky.edu | #Kentuckyextension

# HOW TO HAVE FAMILY CONVERSATIONS ABOUT ESTATE PLANNING

Steve Isaacs, UK agricultural economist

Family decisions about inheritance, money and business leadership are never easy and can sometimes be awkward. However, these are extremely important conversations to have with your children or heirs to ensure your wishes for your farm and business are followed.

Don't wait on your heirs to bring up this discussion. This is one of the times you need to take the reins and initiate an in-person conversation. To help the dialog get flowing, you may want to start at the end and discuss your wishes for your funeral and then move into asset division. You may also ask your financial planner or lender to attend; they can also help you start the conversation.

Before this exchange, think of each of your children, their personalities and interests. Ask yourself questions like:

- Are they all interested in the family farm?
- Are they currently part of the farm's operations?
- Is one better with business matters than others?
- Will they follow your wishes for family farm preservation?

You never want to create an unnecessary burden or obligation on children with no interest in the property. Your heir(s) should see the estate as an opportunity to continue the family business, not an obligation. At this point, you may need to start sharing information about your farm and its profitability with your heir(s), if you have not already done so. Moving forward, they will need to know where the farm financially stands.

These conversations can put you in a tough position. Some of your heirs may feel like they are getting shortchanged, even if they have no interest in farming or running a business. Be realistic and clear about your wishes and empathetic to your children/heirs. Remember they need to be treated fairly and not



necessarily equally. Those not wanting to farm may be given non-farm assets, life insurance proceeds or off-farm investments. Realize that you may not be able to achieve equality in some situations.

Always put your wishes in writing, and have an attorney prepare a will or an estate plan. Dying without these documents could put your successful farm transition in jeopardy. While a will may seem like a final step, it should not be. Revisit it every few years. People change, circumstances change, and sometimes a child with no interest in farming five or 10 years ago may suddenly express an interest.

Clearly stating your wishes to your family members can help prevent family disputes after you leave. For more information on estate planning, contact the Pendleton County Extension office of the University of Kentucky Cooperative Extension Service.

The PCEO is planning an estate planning series. We're diving into the world of estate planning to help you have heart-to-heart talks and craft plans for the future. It's about securing your farm legacy and making sure your hard work lives on. Join us, let's make this journey together – because your story matters, and we want to help you tell it right. •

# UPCOMING AG EVENTS



Please check each event for registration details. Registering allows notification should any changes occur. Classes with no registrations will be canceled without notice.

DATE	MEETING/EVENT	CAIP APPROVED
FEB 14-17	<b>NATIONAL FARM MACHINERY SHOW</b> KY FAIR & EXPO CENTER LOUISVILLE, KY The National Farm Machinery Show covers eight interconnected exhibit halls totaling more than 1.2 million square feet of indoor exhibit space and contains more than 900 exhibitor booths. In four days, you can explore the latest farm trends, technology and tools offered by the industry's best and most trusted brands. **Visit a seminar for CAIP education, info available	MAYBE
FEB 15 6:00 PM	<b>WEBINAR: SHEEP &amp; GOAT PRODUCTION: FACILITIES &amp; FENCING</b> VIRTUAL   Register via QR Code or Call PCEO The Buffalo Trace County Area CES are hosting a winter Sheep & Goat Webinar Series. Join from the comfort of your home for practical and research based information to grow your flock.	YES
FEB 16-17	<b>EAST KENTUCKY FARMER CONFERENCE   COST: \$45</b> MOREHEAD CONFERENCE CENTER   REGISTER ONLINE VIA QR CODE BY JAN 31 The Eastern Kentucky Farmer Conference offers a wide variety of topics including high tunnels, small ruminants, beekeeping, farm funding, marketing, and more! Register via QR Code or at <a href="https://tinyurl.com/2024EKFC">tinyurl.com/2024EKFC</a>	YES
FEB 19 ALL DAY	<b>PENCO HIKING CLUB WINTER OUTING</b> TBD Looking for adventure in the new year? Join the PENco Hikers for camaraderie, natural exploration, and adventure. Call the office for more details.	NO
FEB 21 6:30 PM	<b>BUSINESS OF FARMING   SESSION 2</b> PENDLETON CES   45 David Pribble Dr   Falmouth   859.654.3395 Join us for session 2 as Brett Wolff from the Center for Crop Diversification helps us identify and explore new markets to grow your farm business.	YES
FEB 22 6:00 PM	<b>WEBINAR: SHEEP &amp; GOAT PRODUCTION: BREEDING &amp; LAMBING/KIDDING</b> VIRTUAL   Register via QR Code or Call PCEO The Buffalo Trace County Area CES are hosting a winter Sheep & Goat Webinar Series. Join from the comfort of your home for practical and research based information to grow your flock.	YES
FEB 29 6:00 PM	<b>WEBINAR: SHEEP &amp; GOAT PRODUCTION: HEALTH</b> VIRTUAL   Register via QR Code or Call PCEO The Buffalo Trace County Area CES are hosting a winter Sheep & Goat Webinar Series. Join from the comfort of your home for practical and research based information to grow your flock.	YES

# UPCOMING AG EVENTS

Please check each event for registration details. Registering allows notification should any changes occur.  
Classes with no registrations will be canceled without notice.

CAIP EDUCATIONAL FORM INSTRUCTIONS: Complete the orange educational form. Lindie County Agent will sign at in-person programs. Attending a virtual program? Complete the form, then drop it off at the PCEO for agent approval.

DATE	MEETING/EVENT	CAIP APPROVED
JAN 24 11:00 AM - 12:00 PM	FROM THE WOODS TODAY: FOREST CARBON & FAMILY CARBON PROGRAM VIRTUAL   Link posted to forestry website before the program	YES
	Learn how the Family Forest Carbon Program Works. The program provides annual payments to enrolled landowners to implement forest management practices scientifically proven to enhance carbon sequestration, improve forest health and provide other important ecosystem benefits.	
JAN 24 6:30 PM	BUSINESS OF FARMING   SESSION 1 PENDLETON CES   45 David Pribble Dr   Falmouth   859.654.3395 The 'Business of Farming' will provide farmers with essential legal, organizational, and practical insights for success. From setting up a business structure, mitigating risk, to marketing, this workshop series will help prepare farmers to grow their farm business.	YES
JAN 31 10 AM OR 6:30 PM	PRIVATE PESTICIDE APPLICATOR TRAINING PENDLETON CES   45 David Pribble Dr   Falmouth   859.654.3395 Allows certified producers to buy and apply Restricted Use Pesticides to produce any ag commodity on property that you own or lease and/or the land of your employer. Certification is good for 3 years. <b>**Required for some cost-share programs**</b>	NO
FEB 8 8:00 AM - 3:30 PM CST	ALFALFA AND STORE FORAGE CONFERENCE   COST: \$40 Warren County CES   Register via QR Code	YES
	Join other forage farmers and specialists from across the region to learn strategies on improving your forages and building your business.	
FEB 13 8:00 PM	WHAT'S THE COST OF CHEAP MINERAL? VIRTUAL   Register by emailing <a href="mailto:dbullock@gmail.com">dbullock@gmail.com</a> Dr. Katie VanValin discusses the impacts of using cheap mineral in your beef cattle operations.	YES

# THE AGENT'S CORNER



Cost-Share Update

Approved 2023-2024 CAIP Producers:  
**CAIP Paperwork & Project Deadline:**  
**June 28, 2024 by 3:00 PM**

Questions about the program?  
PC Ag Agent: Lindie Huffman - 859.813.2944  
PC CAIP Admin: Martha Gosney - 859.743.8733

**What is CAIP?**  
The County Agriculture Investment Program is a Cost-share program for farmers to receive funding for farm production expansion and improvements.  
*The next application window is expected in Oct/Nov 2024.*

## Plate it up! RECIPE of the SEASON



### Chicken and Brussels Sprouts One Pan Meal

- 2 skinless, boneless chicken breasts (about 1 pound)
- 1 tablespoon olive oil
- Salt and pepper to taste
- 12-14 Brussels sprouts, trimmed and quartered
- 1 cup sliced fresh mushrooms
- 1 red bell pepper, diced, about 1 cup
- 1 medium yellow onion, diced, about 1 cup
- 2 cloves garlic, minced
- 1/2 cup half-and-half
- 1/4 teaspoon nutmeg
- 1/4 cup Parmesan cheese

**Preheat** oven to 425 degrees F. Cut chicken into bite-sized pieces. **Heat** oil in a heavy, oven-safe skillet or pan over medium heat. **Add** chicken and sauté 3-4 minutes. Lightly **season** with salt and pepper. **Add** vegetables and **stir** gently to combine. **Cook** 3-5 minutes until vegetables are tender. **Remove** from heat. If skillet or pan is not oven-safe, transfer mixture to a baking dish. In a small bowl, **combine** half-and-half, nutmeg and salt and

pepper to taste. **Pour** mixture over chicken and vegetables. **Sprinkle** with Parmesan cheese. **Bake** 25-30 minutes until lightly golden on top. **Serve** hot.

**Yield:** 6, 1 cup servings

**Nutritional Analysis:**  
220 calories, 9 g fat, 3.5 g saturated fat, 0 g trans fat, 70 mg cholesterol, 340 mg sodium, 11 g carbohydrate, 3 g fiber, 4 g sugars, 23 g protein.

Shop for local ingredients with local farmers.



Left: Farm to Table in action with local beef and meet the farmer at Pendleton County High School. Center: Lindie County Agent represented PC Farm Bureau at the annual KYFB convention in discussion meet. Bringing home third place in the state. Right: Terry & Bonnie Logan working on their Ag Water Quality Plan at the AGQWP Workshop.



# KEEP YOUR CHICKENS HEALTHY THIS WINTER

Jacqueline Jacob, agriculture extension project manager

Keeping your chickens happy and healthy in the winter is important, but maintaining a cozy and vigorous flock during the colder months demands diligent care. Chickens, which typically have an internal temperature around 106 degrees Fahrenheit, may experience cold stress when the environment's chill overwhelms their heat-generating capabilities. Indications that your chickens might be feeling the cold include behaviors like feather fluffing, huddling and tucking one foot up to their body for warmth. When such stress is prolonged, it can impair their well-being and could be fatal.

When considering your flock, it's vital to recognize that not all breeds are equally winter-resistant. Heavier breeds, such as the Plymouth Rock or Orpington, tend to endure cold better than their lighter counterparts or those with substantial combs and wattles, which are susceptible to frostbite. Monitoring the flock dynamics, especially if diverse breeds are present, is crucial since bullying over resources can leave some chickens malnourished and more vulnerable to the cold.

Preparing your coop for the winter is fundamental. It should be a sanctuary, protecting against elements and predators alike. Roosts are essential, providing an elevated perch that shields them from the cold ground and also allow the feet to dry better. These should be crafted from materials like wood, avoiding metal or plastic, which can aggravate the cold. Perches should be spacious to prevent overcrowding, but cozy enough to allow shared body heat.

Managing airflow is essential; you must ensure adequate ventilation to prevent the buildup of harmful ammonia and moisture accumulation. Chickens can withstand relatively cold temperatures as long as they are dry. You

may need to insulate the coop to keep the warmth in. On below freezing nights, it may be necessary to provide supplemental heat.

Historically, infrared heat lamps have been used to provide supplemental heat, but they can be a major fire risk. Alternative heat sources that have lower fire risk are now available. Use only equipment designed for livestock, and always have installations carried out by a professional.

Regarding nutrition, chickens' dietary intake tends to increase during winter since they require more energy to keep warm. Treats like scratch grains are beneficial for their warmth-inducing digestion and as an activity stimulant, but should be offered sparingly and never mixed with a complete, nutritionally balanced feed as it would dilute nutrients. Ensuring continuous access to unfrozen water is equally important because chickens will not eat if they cannot drink.

Egg production might dip due to reduced daylight; therefore, some opt for supplementary lighting to stimulate laying. It is important that the number of light hours per day never decreases during egg production. A minimum of 14 light hours per day (no more than 18) is recommended to maintain egg production throughout the year.

Tending to chickens in winter revolves around striking a delicate balance: ensuring they're warm but not overheated, well-fed but not overindulged and active yet secure from the harsh external environment. With meticulous planning and proactive management, your poultry can thrive even when the temperatures drop.



The Martin-Gatton College of Agriculture, Food and Environment is an Equal Opportunity Organization with respect to education and employment and authorization to provide research, education information and other services only to individuals and institutions that function without regard to economic or social status and will not discriminate on the basis of race, color, ethnic origin, national origin, creed, religion, political belief, sex, sexual orientation, gender identity, gender expression, pregnancy, marital status, genetic information, age, veteran status, physical or mental disability or reprisal or retaliation for prior civil rights activity.

Reasonable accommodation of disability may be available with prior notice. Program information may be made available in languages other than English.

Inquiries regarding compliance with Title VI and Title VII of the Civil Rights Act of 1964, Title IX of the Educational Amendments, Section 504 of the Rehabilitation Act and other related matter should be directed to

Equal Opportunity Office, Martin-Gatton College of Agriculture, Food and Environment, University of Kentucky, Room S-105, Agriculture Science Building, North Lexington, Kentucky 40546,

the UK Office of Institutional Equity and Equal Opportunity, 13 Main Building, University of Kentucky, Lexington, KY 40506-0032 or

US Department of Agriculture, Office of the Assistant Secretary for Civil Rights, 1400 Independence Avenue, SW, Washington, D.C. 20250-9410.

## Pendleton County Dead Animal Removal Program

This program is for Pendleton County Farmers with livestock.  
**Call Countryside Industries | 859.421.1867**

- ✓ Place the animal on a hard surface near front of your property.
- ✓ Provide clear directions to your farm.
- ✓ Indicate the type of animal.
- ✓ Leave your name and phone number.

This program provided by Pendleton County Conservation District  
 859.654.3376 ext. 3

# WINTERIZE Your Home

*Your home isn't the only one that can be winterized. Your neighbors and those most vulnerable might need your help too!*

weather.gov